



## **Cartridge Rescue™ Schools Fundraising Program**

RTS Imaging Pty Ltd is pleased to offer the Cartridge Rescue™ Schools Fundraising Program.

Designed to be an easy, environmentally friendly, fundraising option for schools, it allows students to bring used printer cartridges from home or from their parents' offices for re-use and recycling. In turn your school will receive \$0.50-\$1.00 for each reusable cartridge.

Re-use is a superior form of recycling, in line with the waste hierarchy. Over 90% of all cartridges received in our collection programs are re-used and only the remainder is recycled when re-use is not possible. Re-use eliminates the need for a new cartridge to be made, saving valuable resources and reducing environmental damage.

You will find on our website under the schools icon advertisements ready to download straight into your school newsletter and a soft copy of the attached flyer that shows what happens to the cartridges your school will collect.

With over 15 years of cartridge collection and re-use experience we are certain you will find the program easy to use and a successful way of combining environmental initiatives with fundraising.

**[WWW.CARTRIDGERESCUE.COM.AU](http://WWW.CARTRIDGERESCUE.COM.AU)**

**Phone: 1800 628 854**

**Fax: 1800 732 023**



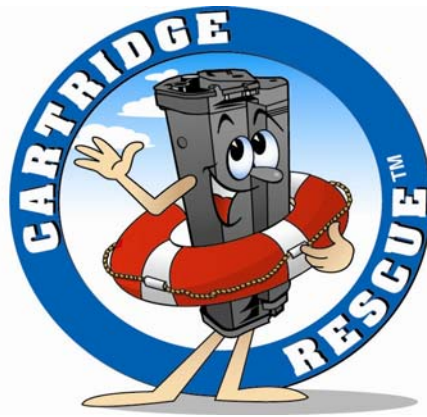
## **Cartridge Rescue™ Schools Fundraising Program**

### **How to Participate...**

- Step One: Decide how many locations you would like to have a collection box in your school. You may find having them centrally at the office works best and perhaps one in your computer room
- Step Two: Order a schools collection sleeve and recycling box for each location by calling 1800 628854 or visit [www.cartridgerescue.com.au](http://www.cartridgerescue.com.au)
- Step Three: Let students and parents know about the program. Place the advertisements from your CD into your school flyers or send them home with the students and put the flyers up in classrooms. Parents can also participate direct from work (see next page).
- Step Four: Once the box/s are full call 1800 628854 or visit [www.cartridgerescue.com.au](http://www.cartridgerescue.com.au) to arrange collection. Slide off your collection sleeve and tape closed your recycling box. TNT couriers will then arrive within school hours to collect your boxes with pre-printed labels so you don't have to fill anything in
- Step Five: Place an empty recycling box under your collection sleeve and you are ready to start again
- Step Six: RTS Imaging will send you a cheque each month for the cartridges returned and you can use the funds for whatever your school needs most

**[WWW.CARTRIDGE RESCUE.COM.AU](http://WWW.CARTRIDGE RESCUE.COM.AU)**

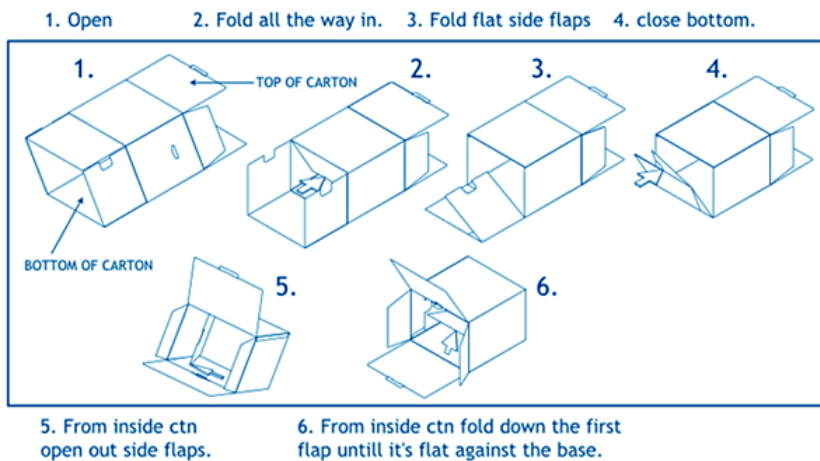
**Phone: 1800 628 854**  
**Fax: 1800 732 023**



## Cartridge Rescue™ Schools Fundraising Program

### How to put your Box and Sleeve together...

1. **Recycling Box** – there are printed instructions on the bottom of the box and these are also shown below



2. **Collection Sleeve** – once assembled the collection sleeve slides over the recycling box and is re-used. Once your box is full you just slide it off and put an empty recycling box underneath





## **Cartridge Rescue™ Schools Fundraising Program**

### **Helpful Hints...**

- Parents can also participate directly from their offices. They just need to order their own boxes via [www.cartridgerescue.com.au](http://www.cartridgerescue.com.au) and when requesting pick up via the website list their chosen school in the 'Special Instructions' field.
- To avoid students or parents ending up with ink or toner on their hands wrap the cartridges in plastic wrap or place in plastic bag before bringing to school (the plastic will also be recycled).
- If you have a great idea on how you could collect even more cartridges we are here to help you so please contact us.
- If you need assistance with any aspect of the program or are having difficulties with any aspect please let us know.
- We will never try to sell your school anything. RTS Imaging is a wholesale company and is not allowed to sell directly to schools.
- You may wonder how we can pay you for your waste? RTS Imaging re-uses the used cartridges to make new replacement cartridges which many businesses in Australia and overseas purchase. This is our way of contributing back to our local market and assisting the environment.
- If you would like a soft copy of any of this information please let us know.
- Toner Bottles from photocopiers can be included but do not attract any rebate, nor do Epson inkjet & cartridges or other non reusable cartridges.